

## D-ISC 100

Universal operating and display unit in stainless steel field housing for the new generation sensors from DURAG, e.g. D-FL 100, D-FL 220, D-R 220, D-R 290 or D-R 320

### Features

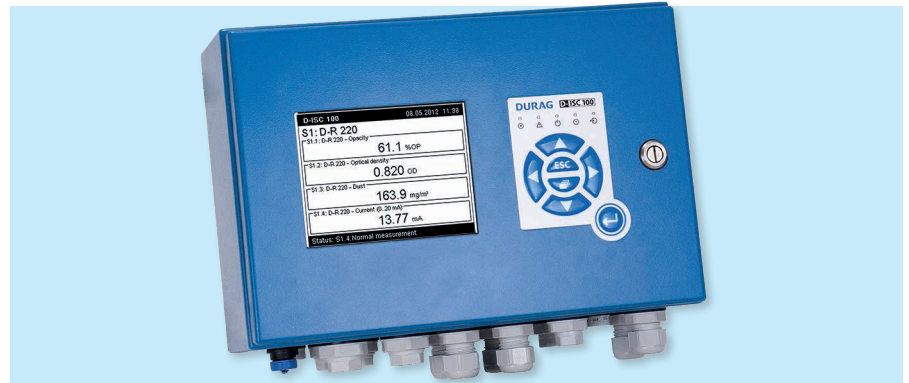
- Easy set-up and automatic detection of up to eight connected sensors
- Uniform operation of various sensors
- Large LC Display for measured value display
- Comfortable operation and handling via keypad
- USB interface for local device operation
- Remote support via intranet/ internet
- Modular design, expansion slots and slot for external converter available
- Easy update via SD memory card
- Power supply 24 VDC/2A for one directly connected sensor

## D-ESI 100

Service- and Parameterisation Software

### Features

- Easy set-up and automatic detection of the connected sensors
- Uniform parameterisation of various sensors
- Remote support via Intranet/ Internet
- Communication via USB, DURAG-Modbus or Modbus TCP



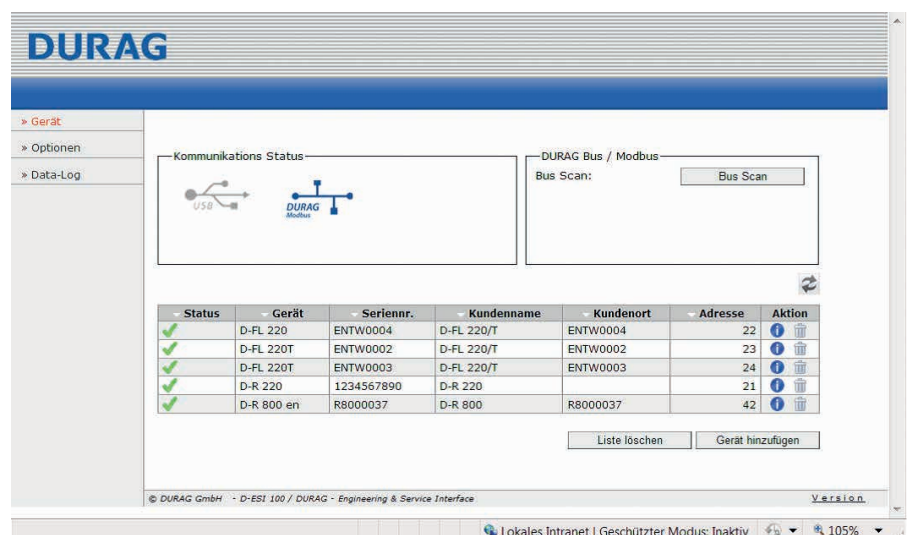
### Application

The universal operating and display unit D-ISC 100 allows the connection of up to eight measuring devices as for instance dust and volume flow monitors. It offers access via the built-in panel, a connected PC or remote access via the intranet/internet and easy parameterisation of the connected DURAG devices. The display allows direct view of the current measuring values.

### Options

- 4 slots for expansion modules:
  - Modbus RTU interface acc. to VDI4201-3
  - 4 analogue outputs 0/ 4-20mA/ 500 Ohm
  - 4 analogue inputs 0-20mA/ 100 Ohm
  - 4 digital inputs
  - 4 relay outputs 48 V/ 0.5A
- Interface converters, e.g. for
  - Profibus DP
- Software modules, e.g. Modbus TCP acc. to VDI 4201-3

analogue output	0/ 4 ... 20 mA/ 500 Ohm	housing	Stainless steel 304, RAL 5017
digital outputs	3 relay outputs 48 V/ 0.5 A	dimensions (h x w x d)	112 x 330 x 220 mm
digital input	1 digital input, operation via potential-free contact	weight	5 kg
ambient temperature	-20 up to +50°C, -40 up to +60°C optional	protection rating	IP65
service-Interface	USB, TCP/IP	power supply	90 ... 264 VAC, 48 ... 62 Hz



### Application

D-ESI 100 is a graphical interface for operation, parameterisation and management of the connected sensors. It offers access to the parameters of the connected sensors via USB interface, the Modbus RTU interface or via Modbus TCP.

### Requirements

- PC with Microsoft Windows® operating system 7 or 8
- USB interface
- Serial interface RS485
- Ethernet interface

